

Funded by



Department  
for Education



Fully funded by the DfE

Nationwide delivery

Flexibly delivered around you



## Leadership NPQs

For teachers and leaders  
looking to become:

- Senior Leaders (NPQSL)
- Headteachers (NPQH)
- Executive Headteachers (NPQEL)
- Early Years Leaders (NPQEYL)

Plus details about a funded coaching  
package for headteachers (see page 12)

**"The leadership  
NPQs prepare current  
and aspiring school leaders  
for all of the challenges of  
senior leadership, headship,  
executive leadership  
and now Early Years  
Leadership, too!"**



Vanessa Macdonald,  
Lead Facilitator for  
Leadership NPQs.

Learn. Share. Grow.



Best  
Practice  
Network



Outstanding  
Leaders  
Partnership

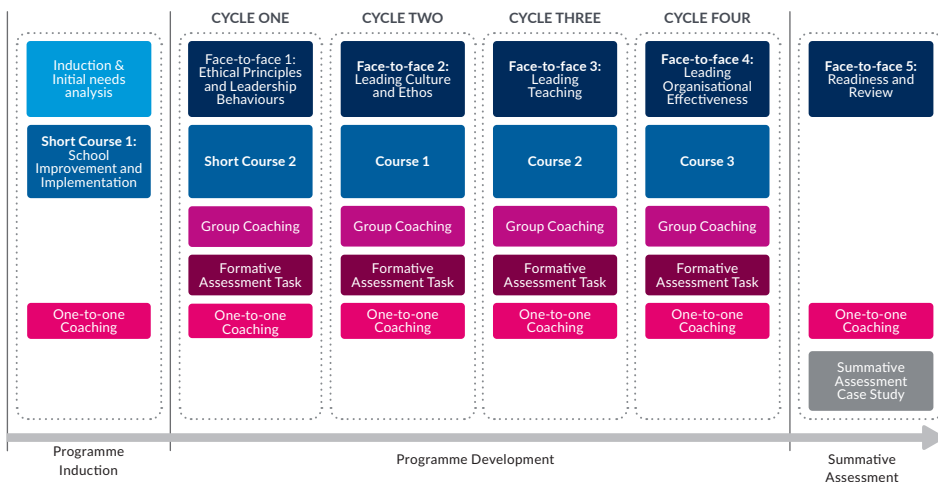
# NPQs from Best Practice Network & Outstanding Leaders Partnership

The National Professional Qualifications (NPQs) are a suite of DfE-accredited qualifications for school leaders, designed to support professional development.

The four Leadership NPQs in this brochure are for teachers and leaders who want to become senior leaders (NPQSL), headteachers (NPQH), executive headteachers (NPQEL) or early years leaders (NPQEYL).

Best Practice Network's unique approach to NPQ delivery means participants access individualised training based on areas they have identified as needing improvement. Our cyclical programme structure utilises Face-to-Face training, online learning and 1:1 coaching to deliver a comprehensive learning experience that fits around busy teacher timetables.

## NPQ Programme Structure



# Why Best Practice Network NPQs?



**Funded by  
the DfE**

## ✓ Flexible training

The qualifications are designed to be flexible to fit with your busy working role. Training is delivered in bite-sized chunks, and you can learn at a time and pace that suits you.

On average you will need to spend between 1 and 2 hours per week working towards completing this NPQ. Where possible, you should do this during dedicated career development time in school hours.

## ✓ Access the latest research

Benefit from the latest evidence-based learning and approaches to great teaching and leadership.

## ✓ Enact positive change

You will be encouraged to apply and translate what you've learned to your own school context. Your training provider will give you models and examples that will help you translate theory into practical skills you can use in your setting.

## ✓ Learning with people from different education settings

Take advantage of training alongside a diverse group of fellow educators with lots of different perspectives. You will learn from each other's experiences and be able to bounce ideas off each other during group sessions and collaborative practical tasks.

## ✓ Individualised training

You will be able to focus on specific areas of leadership where you want to improve your knowledge. This will help you make evidence-informed decisions and action positive change.

## ✓ Learning backed by evidence

You will be introduced to evidence-informed practices. This will enable you to develop strategies to improve teaching and pupil performance at your school.

# National Qualifications Locally Delivered

Thanks to our extensive NPQ Delivery Partner Network (see map), over 30,000 teachers and leaders have been able to engage with our NPQs in local schools and venues across England.

We draw from the local expertise of our partners to both develop and deliver the NPQs. This close relationship with local experts ensures we can deliver qualifications contextualised to local conditions.

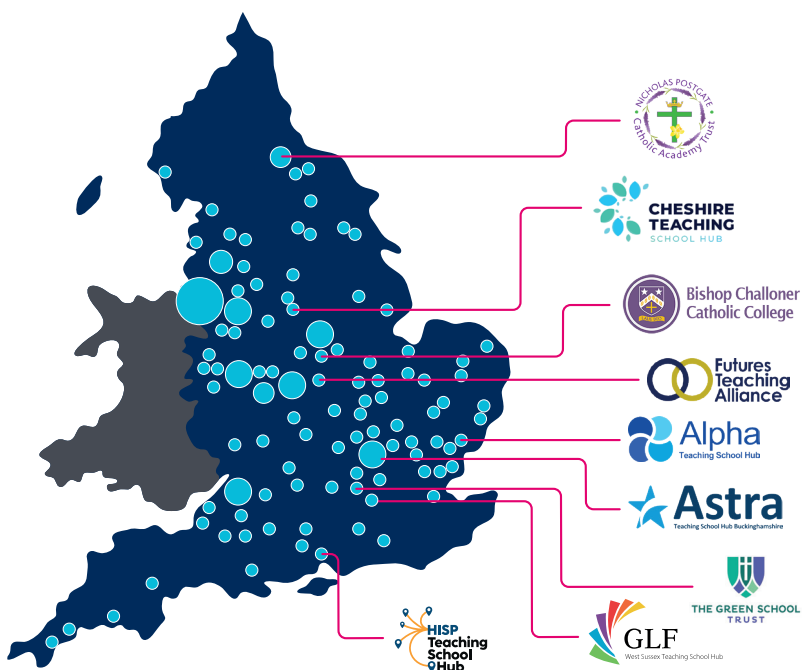
With almost 1,000 NPQ groups now running across England, your nearest NPQ group is just around the corner.



## Chris Ludlow, Head of Partnerships.

Chris is responsible for managing our Delivery Partner Network and works closely with partners on all aspects of programme delivery.

If your school group would like to become an NPQ delivery partner please contact Chris at [partnerships@bestpracticenetwork.co.uk](mailto:partnerships@bestpracticenetwork.co.uk)



# Partner focus



**Sufian Sadiq**  
Director



CHILTERN  
LEARNING  
TRUST

## As Director of Teaching School at Chiltern Learning Trust, Sufian oversees two regional Teaching School Hub areas.

A passionate activist within the educational landscape around equity and inclusion, Sufian is a Fellow and Board Member of the Chartered College of Teaching, as well as a Fellow for the Chartered Institute of Educational Assessors.

"The appetite for CPD is increasing and the way in which people 'consume' CPD has changed since the pandemic and it is great to work with Best Practice Network to make CPD accessible for all and to those school leaders that simply through no choice of their own cannot take time away from school.

CPD must become a contributor to wellbeing for teachers and not a trigger for creating stress and workload."

"The NPQs delivered by BPN provide a strong framework for developing excellent schools and school leaders nationally."



**Karen Taylor-Paul**  
Director



**AlbanTSH**  
Teaching School Hub

## "Since moving to Best Practice Network, our participants comment positively on the contextualised approaches to case studies and exemplars.

BPN listen to our feedback at weekly partnership meetings and at the strategic board; their pro-active approach to implementing change is one of the many positive aspects of our partnership."



## National Professional Qualification for Senior Leadership (NPQSL)

Develop your leadership knowledge and expertise to improve outcomes for teachers and pupils in your school.

### Who is it for?

NPQSL is for teachers and leaders who are, or want to be, senior leaders with cross-school responsibilities.

### Entry requirements

#### Applicants must have

- QTS and/or QTLS and/or a Level 5 (or higher) qualification in any subject
- either 2 full years' experience of teaching following achieving QTS/QTLS or 2 full years' experience in current role following completion of Level 5 (or equivalent)

## Qualification elements

<b>INDUCTION STAGE</b>	<b>Induction (incl. Initial needs analysis: 1 hour)</b>	<b>6 hours</b>	Total Guided Learning Hours: <b>97</b>
<b>DEVELOPMENT STAGE</b>	<b>Face-to-face events</b>	<b>24 hours</b>	
	<b>Online course study</b>	<b>38 hours</b>	
	<b>Formative assessment tasks</b>	<b>20 hours</b>	
	<b>Leadership performance coaching</b>	<b>9 hours</b>	
<b>SUMMATIVE ASSESSMENT STAGE</b>	<b>Case study scenario</b>	<b>Max. 1500 words</b>	

Learn more and apply at [bestpracticenetwork.co.uk/NPQSL](https://bestpracticenetwork.co.uk/NPQSL)

For more information call **0117 920 9428** or email [enquiries@bestpracticenetwork.co.uk](mailto:enquiries@bestpracticenetwork.co.uk)

"Lots of information and great discussion with other people to aid my learning and review my own leadership."

NPQSL Participant,  
Spring 2022 Intake

## Benefits

- ✓ **Gain** the specialist expertise needed to tackle school improvement priorities
- ✓ **Support** the development of a positive, predictable and safe environment for pupils
- ✓ **Contribute** to your school's strategic direction and establish an environment for pupil success
- ✓ **Ensure** staff feel supported and valued
- ✓ **Attend** 4 Face-to-Face events and collaborate with peers



Scan here to learn more and apply.

## AT A GLANCE



**Full scholarships for all state-funded schools**



**Face-to-Face events**

4



**This Course Awards**

30 Master's Credits



**Course Duration**

18 months

**Coaching**

9 hours



**Intakes**

Start in Spring or Autumn



**Andrew Harris**  
NPQ Online  
Programme Lead

## PROGRAMME LEAD

Transitioning from a military career to education I have learnt from two decades of teaching and organisational management the value and need of strong and interventional leadership. My passion can now be directed in leading the online NPQ programme development and delivery through our experienced workforce to challenge, support and strive for excellence through Best Practice Values.





## National Professional Qualification for Headship (NPQH)

NPQH allows participants to develop the knowledge that underpins expert school leadership and apply it to become an outstanding headteacher.

### Who is it for?

For school leaders who are, or are aspiring to be, a headteacher or head of school with responsibility for leading a school.

### Entry requirements

#### Applicants must have

- QTS and/or QTLS and/or a Level 5 (or higher) qualification in any subject
- experience as a current headteacher, deputy headteacher, vice principal or equivalent role and about 18 months away from applying for Headship (if not already in post)

## Qualification elements

<b>INDUCTION STAGE</b>	<b>Induction (incl. Initial needs analysis: 1 hour)</b>	<b>6 hours</b>	<b>Total Guided Learning Hours:</b>  <b>112</b>
<b>DEVELOPMENT STAGE</b>	<b>Face-to-face events</b>	<b>30 hours</b>	
	<b>Online course study</b>	<b>38 hours</b>	
	<b>Formative assessment tasks</b>	<b>28 hours</b>	
	<b>Leadership performance coaching</b>	<b>10 hours</b>	
<b>SUMMATIVE ASSESSMENT STAGE</b>	<b>Case study scenario</b>	<b>Max. 1500 words</b>	

Learn more and apply at [bestpracticenetwork.co.uk/NPQH](https://bestpracticenetwork.co.uk/NPQH)

For more information call **0117 920 9428** or email [enquiries@bestpracticenetwork.co.uk](mailto:enquiries@bestpracticenetwork.co.uk)



“Meeting people from lots of different locations and lots of different settings has been really valuable for my development and we get a real buzz from talking to each other.”

NPQH Participant,  
Spring 2022 Intake

## Benefits

- ✓ **Gain** school focussed leadership knowledge
- ✓ **Learn** what effective headteachers need to know
- ✓ **Lead** the strategic direction of your school
- ✓ **Support** the development of a positive, predictable and safe environment for pupils
- ✓ **Contribute** to your school's strategic direction and establish an environment for pupil success
- ✓ **Ensure** staff feel supported and valued
- ✓ **Attend** 5 Face-to-Face events and collaborate with other headteachers and aspiring headteachers



Scan here to learn more and apply.

## AT A GLANCE



**Full scholarships for all state-funded schools**



**Face-to-Face events**

5



**This Course Awards**

60 Master's Credits



**Course Duration**

18 months

**Coaching**

10 hours



**Intakes**

Start in Spring or Autumn



**Catherine Sellars**  
Head Instructional Designer

## HEAD INSTRUCTIONAL DESIGNER

As the Head Instructional Designer, Catherine is responsible for the creation of the online elements of the NPQs. Catherine has over 20 years' experience designing courses and CPD for teachers and other education professionals.



## National Professional Qualification for Executive Leadership (NPQEL)

Develop the expertise needed to lead change and improvement across a group of schools or multi-academy trust.

### Who is it for?

This course is for school leaders who are, or want to be, an executive headteacher or other executive leader leading across more than one school.

### Entry requirements

#### Applicants must have

- QTS and/or QTLS and/or a Level 5 (or higher) qualification in any subject
- experience as a current serving headteacher (or equivalent role) with a minimum of 3 years' experience

## Qualification elements

<b>INDUCTION STAGE</b>	<b>Induction (incl. Initial needs analysis: 1 hour)</b>	<b>6 hours</b>	Total Guided Learning Hours: <b>124</b>
<b>DEVELOPMENT STAGE</b>	<b>Face-to-face events</b>	<b>36 hours</b>	
	<b>Online course study</b>	<b>38 hours</b>	
	<b>Formative assessment tasks</b>	<b>34 hours</b>	
	<b>Leadership performance coaching</b>	<b>10 hours</b>	
<b>SUMMATIVE ASSESSMENT STAGE</b>	<b>Case study scenario</b>	<b>Max. 1500 words</b>	

Learn more and apply at [bestpracticenetwork.co.uk/NPQEL](https://bestpracticenetwork.co.uk/NPQEL)

For more information call **0117 920 9428** or email [enquiries@bestpracticenetwork.co.uk](mailto:enquiries@bestpracticenetwork.co.uk)

"The course has enabled me to link with leaders in a variety of organisations. These connections allow me to learn about potential next steps for my school (single academy trust)."

NPQEL Participant,  
Spring 2022 Intake

## Benefits

- ✓ **Excel** as an executive leader
- ✓ **Join** 1:1 coaching sessions
- ✓ **Receive** advice from experts and tailored feedback on your performance
- ✓ **Build** your network of headteachers and executive leaders
- ✓ **Lead** the strategic direction of your school
- ✓ **Support** the development of a positive, predictable and safe environment for pupils
- ✓ **Contribute** to your school's strategic direction and establish an environment for pupil success
- ✓ **Ensure** staff feel supported and valued
- ✓ **Attend** 6 Face-to-Face events and grow your network of headteachers and executive leaders



Scan here to learn more and apply.

## AT A GLANCE



**Full scholarships for all state-funded schools**



**Face-to-Face events**  
6



**This Course Awards**  
60 Master's Credits



**Course Duration**  
18 months



**Coaching**  
10 hours

### Intakes

Start in Spring or Autumn



**Simon Lockwood**  
Programme Lead for  
Executive Leadership

## PROGRAMME LEAD

Simon has worked in Education for 40 years as a teacher, leader and local authority school improvement adviser and head of service.

His work is focused on teacher development and effective leadership development. He is an expert facilitator of adult and professional learning, with wide experience in delivering programmes from ITT to NPQH and NPQEL.



## Early Headship Coaching Offer (EHCO)

This targeted one-year support package has been tailored to the needs of new headteachers.

It provides structured, unassessed support based on the best available evidence about what makes an effective headteacher. The EHCO can be completed alongside the National Professional Qualification for Headship (NPQH) and is also suitable for NPQH graduates.

### Induction

These 3 sessions are compulsory

Welcome briefing



1 hour

Skills Audit

Define goals and create engagement profile



1 hour

Initial coaching session



1 hour

### Early Headship Coaching Offer Menu

#### Coaching Pathway

- Three one hour 1:1 coaching sessions
- Three one and a half hour expert-led group coaching/mentoring sessions.
- Three peer-led support networks, meetings and review.

#### Access to:

- Recorded leadership 'core business' insights by experienced leaders
- An online library of research materials, recordings and podcasts

### Reflection and feedback

Final coaching session and Impact Review



1 hour

Reflective journal



Ongoing

Learn more and apply at [bestpracticenetwork.co.uk/EHCO](https://bestpracticenetwork.co.uk/EHCO)

For more information call 0117 920 9428 or email [enquiries@bestpracticenetwork.co.uk](mailto:enquiries@bestpracticenetwork.co.uk)

“The course has enabled me to link with leaders in a variety of organisations. These connections allow me to learn about potential next steps for my school (single academy trust).”

NPQEL Participant,  
Spring 2022 Intake

## Who is it for?

You're eligible for this support if you meet the following criteria:

- are in your first 5 years of headship at a state-funded school or state-funded organisation that offers 16 to 19 places in England
- are taking or have completed the NPQH

## Benefits

- ✓ **Regular** meetings with a great leadership coach
- ✓ **Time** to reflect on challenges in coaching calls
- ✓ **Discover** solutions and next steps through careful questioning from the coach
- ✓ **Access** to evidence-based research
- ✓ **Be empowered** to make decisions based on proven research
- ✓ **Network** with other headteachers
- ✓ **Share** your headship journey with peers
- ✓ **Talk** through systems and processes used in different schools



Scan here to learn more and apply.

## AT A GLANCE



**Full scholarships for all state-funded schools**



**1:1 Coaching and expert-led conversations**

9 hours



**Course Duration**

12 months



**Intakes**

Start in Spring or Autumn



**Alis Rocca**

Lead Facilitator, Early Headship Coaching Offer

## LEAD FACILITATOR

Alis has been a Headteacher, is a leadership performance coach, and is an education consultant and presenter, working with schools to develop empowered leaders for individual and organisational success. Alis has a Masters Degree in Leadership from Cambridge University.

*“EHCO empowers you to lead in the way that you know aligns with your own values and principles, within your own unique school context.”*



## National Professional Qualification in Early Years Leadership (NPQEYL)

NPQEYL is designed to support early years leaders to develop expertise in leading high-quality education and care, as well as in effective staff and organisational management.

### Benefits

- ✓ Establish an effective culture across the nursery
- ✓ Deliver a high-quality and ambitious curriculum that meets the needs of all your learners and ensures all children experience success
- ✓ Support staff to engage in effective professional development
- ✓ Manage resources effectively
- ✓ Work successfully with parents, services and other early years settings

### Qualification structure

We work with Teach First to deliver the NPQLL and so the qualification structure differs to that of our other Specialist NPQs.

<b>1. Introduction</b> Introductory module and seminar for programme members to outline the programme.	<b>3. Group seminars</b> Focused on applying and contextualising learning and an opportunity to share practice and collaborate.	<b>5. Implementation</b> Practice implementing a small improvement. Tightly contained, and focused on impact in school.
<b>2. Self-directed study</b> Online learning focused on building core knowledge and interim tasks and practice, includes personalised pathways.	<b>4. Conferences</b> Twice during the programme. Opportunity to revisit and build on content from the curriculum, as well as collaboration.	<b>6. School visits and 1:1</b> Facilitate a visit to a different school/setting to allow programme members to observe and understand expertise in context.

Learn more and apply at [bestpracticenetwork.co.uk/NPQEYL](https://bestpracticenetwork.co.uk/NPQEYL)

For more information call **0117 920 9428** or email [enquiries@bestpracticenetwork.co.uk](mailto:enquiries@bestpracticenetwork.co.uk)

“The NPQEYL is a really exciting opportunity to deliver meaningful change in your individual setting from creating an effective culture to aligning staff to the overall mission.”



## Who is it for?

NPQEYL is for leaders qualified to at least level 3 with a full and relevant qualification who are, or are aspiring to be:

- managers of private, voluntary and independent nurseries
- headteachers of school-based or maintained nurseries
- childminders with leadership responsibilities (you work with, employ or are close to employing an assistant).

## Entry requirements

- A full and approved Level 3 Early Years qualification or higher
- The qualification should have valid, reliable assessment and awarding procedures and must include an element of assessed performance evidence
- If you do not hold a full and approved Level 3 Early Years qualification you will be asked to provide a minimum of 100 words (max 200) detailing your experience relating to Early Years, Childcare or Play work



Scan here to learn more and apply.

## AT A GLANCE



**Full scholarships for all state-funded schools**



**Online Training & Face-to-Face Events**



**Course Duration**

18 months



**Intakes**

Start in Spring or Autumn



**Nicola Bostock-Hayes**  
Programme Manager

## PROGRAMME MANAGER

For 16 years Nicola has worked predominantly in secondary education and for the past 10 years on school senior leadership teams. She is passionate that children and young people are at the heart of all that we do within education and that educationalists have access to high-quality training to secure the best outcomes for all.



# Apply for an NPQ

You can apply for any of our NPQs directly through our website, but we suggest you take the following steps before applying:

## STEP 1

Speak to your headteacher or line manager about getting support to complete a National Professional Qualification (NPQ).

## STEP 2

Visit [bestpracticenet.co.uk/NPQ](https://bestpracticenet.co.uk/NPQ)

We have in-depth programme guides, case studies and webinar recordings which will give you a good understanding of the requirements of each NPQ.

## STEP 3

**Talk to us!** We can be contacted through the **livechat** on our website or by **phone** or **email** and we will be delighted to answer any questions you might have.

## STEP 4

Apply directly through our website. Applications take approximately **20 minutes** to complete and our NPQ team is on-hand and **ready to assist**.



## Learn more

0117 920 9428

[enquiries@bestpracticenet.co.uk](mailto:enquiries@bestpracticenet.co.uk)

[bestpracticenet.co.uk/npq](https://bestpracticenet.co.uk/npq)



Best  
Practice  
Network

HOME OF



Outstanding  
Leaders  
Partnership



WORLD  
LAND  
TRUST™

[www.carbonbalancedprinter.com](http://www.carbonbalancedprinter.com)  
Registration No. CBP2228